

Rinnai

ARRIVA



MASONRY
FIREPLACE



INBUILT MOCK
CHIMNEY



WALL
MOUNTED

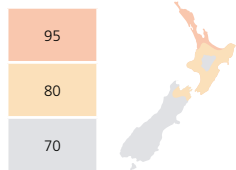


Registered product under EECA'S ENERGYWISE™ programme. Conditions apply.

Visually stunning, with a glass front and four beautiful fascia designs, the **Rinnai Arriva** delivers excellence in heating power and performance.

- High performance: Unrivalled efficiency ensures highest heat output for lowest energy consumption
- Beautiful and versatile: Arriva offers four distinct fascia designs to enhance and fit into your home environment
- Reassuring Features: Thermostat control, set and forget dual timer and child lock
- Rinnai Power Flue: Removes usual flueing or venting restrictions and can be installed in rooms where other gas fires simply cannot go
- Breathe easy: Approved by Asthma and Respiratory Foundation of New Zealand
- Simple Installation: No building consent required

Zone Heat Area m² (up to)

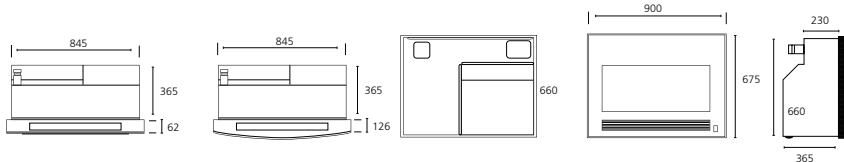


Area heated relevant to your geographical location in New Zealand.

INPUT (MAX)	OUTPUT HIGH	OUTPUT LOW
31.5MJ/h	7.0kW	1.8kW



MODEL	APPLIANCE			OUTER FLUE (DIAMETER)	INNER FLUE (DIAMETER)	MANTEL HEIGHT (MIN)	MANTEL DEPTH (MAX)
	HEIGHT	WIDTH	DEPTH				
RINNAI ARRIVA	675mm	900mm	365mm	80mm	50mm	200mm	150mm



CUTOUT DIMENSIONS	
HEIGHT	660-665mm
WIDTH	860mm
DEPTH	380mm (with direct flue) 475mm (with extension)

- Available in Natural Gas or LPG

*5.2 stars are achieved with extended flueing installation.

Electricity outlet or power point is required for this appliance to operate.

This information is not intended as an installation guide. Please consult product specification, available at www.rinnai.co.nz, by clicking the Tradesmart link. Specifications may change without notice.



Rinnai Arriva Midnight
A continuous curve of glossy black glass.



Rinnai Arriva Shine
Cool, minimalist stainless steel.



Rinnai Arriva Plasma
A smooth sweep of flawless glass.

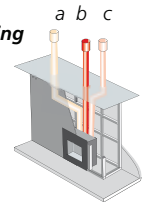


Rinnai Arriva Classic
The classic appeal of matt black steel.

FLUEING OPTIONS

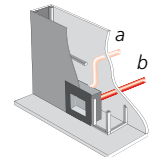
Vertical flueing

- a) offset sideways
- b) vertical extension
- c) offset rear



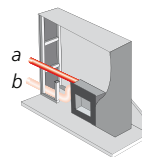
Rear flueing

- a) extended offset
- b) direct



Horizontal

- a) horizontal extension
- b) extended offset



Down & out

- a) sideways
- b) rear

